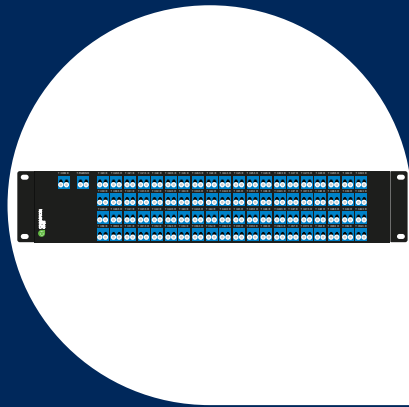


PASSIVES DATA SHEET


80 Channel Dual Fiber DWDM Mux/Demux ITU Ch. 20 – 59.5

Champion ONE's DWDM passive networking products for inside-plant applications provide a cost-effective, high-reliability solution to fiber capacity challenges.

Technical Specifications

WAVELENGTH INFORMATION

DWDM channel wavelengths: ITU Ch.20–59.5, 50GHz spacing
 -1dB channel bandwidth: 0.20nm
 -3dB channel bandwidth: 0.28nm

FORM FACTOR AND CONNECTOR TYPES

2RU rackmount enclosure
 LC/UPC connector (all ports)

DIMENSIONS (LXWXH)

Body: 250 x 440 x 88 mm
 Faceplate: 482.6 x 88 mm

TEMPERATURE RANGE

-5° C to 65° C (operating)
 -40° C to 85° C (storage)

WARRANTY

All feature a limited 5-year warranty

COMPLIANCES

RoHS compliant
 Telcordia GR-1209, GR-1221

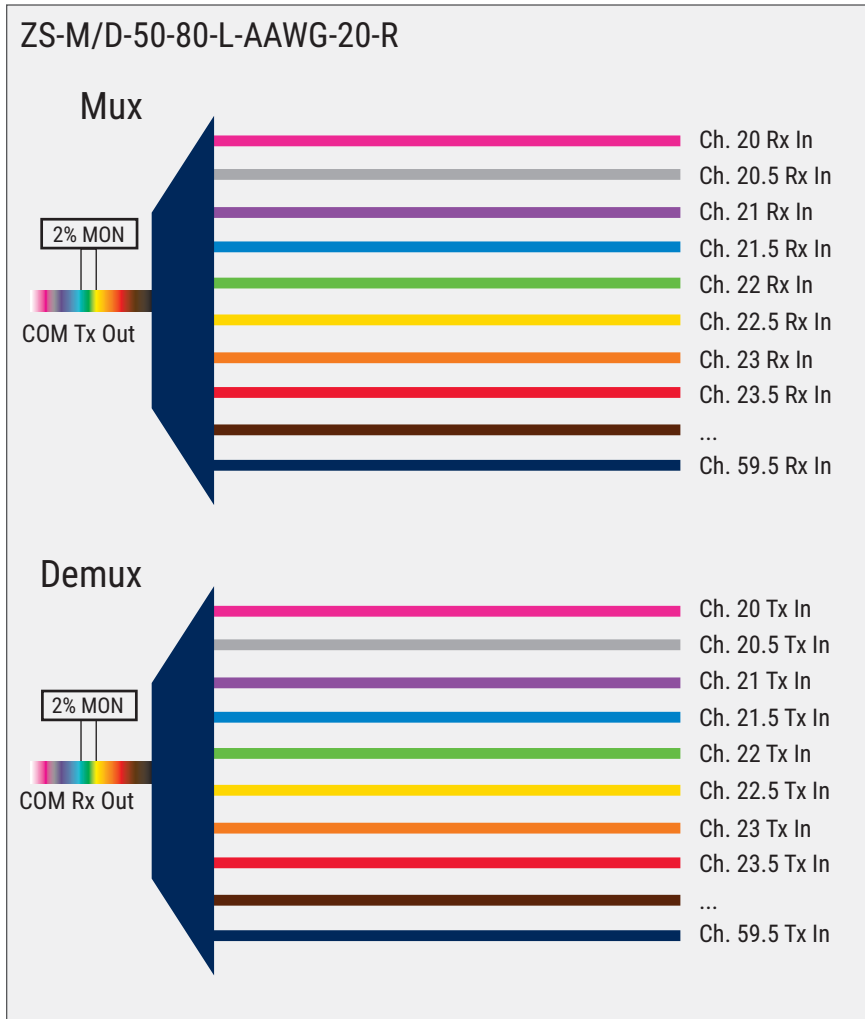
Parameter	Value
DWDM Channel Insertion Loss (dB)	≤ 8.5
MON Port Insertion Loss (mux/demux, dB)	≤ 27.5 / 19.0
Wavelength Stability (nm)	± 0.05
Adjacent Channel Isolation between DWDM Channels (dB)	≥ 25
Non-Adjacent Channel Isolation Between CWDM Channels (dB)	≥ 30
Total Channel Isolation (dB)	≥ 20

Parameter	Value
Polarization Dependent Loss (dB)	≤ 0.5
Directivity (dB)	≥ 40
Return Loss (dB)	≥ 40
Polarization Mode Dispersion (ps)	≤ 1.0
Fiber Type	SMF-28e+ 900 μm
Filter Type	AAWG
Max Power Handling (mW)	500

Ordering Information

C1 Part Number	Description
ZS-M/D-50-80-L-AAWG-20-R	DWDM M/D, 50GHz, 80CH, LC, Athermal AAWG, CH20 start, 2% Mon, 1RU

Network Diagram



Physical Diagram

