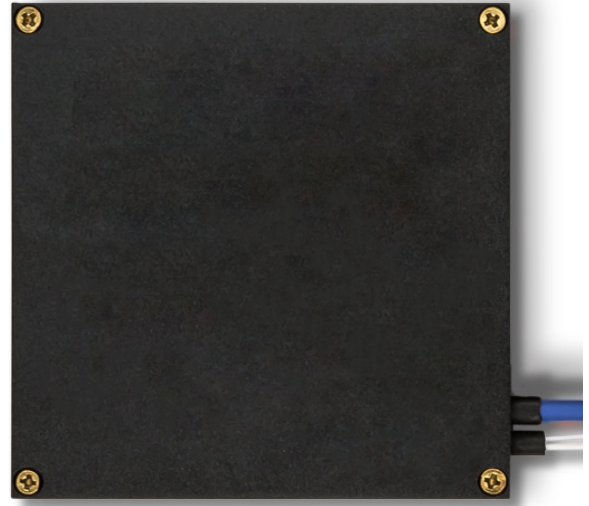
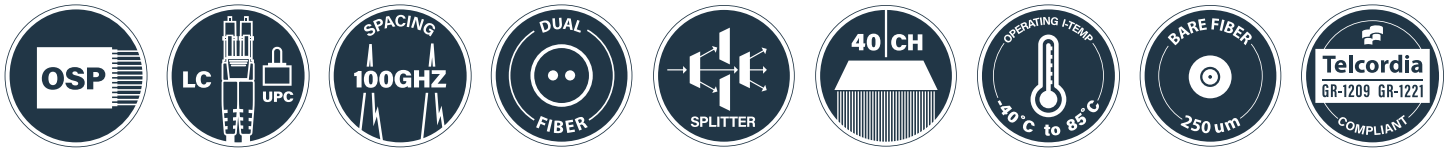


Features:

- 5-Band DWDM Band Pass Splitter
- Channel Wavelengths: DWDM
 CH. 16 - CH. 23
 CH. 25 - CH. 32
 CH. 34 - CH. 41
 CH. 43 - CH. 50
 CH. 52 - CH. 59
- Channel Spacing: 100GHz
- Maximum Optical Power: 300mW
- Connector Type: LC/UPC
- Reliability: Telcordia GR-1209, GR-1221
- Operating Temperature: -40 to 85°C



- Storage Temperature: -40 to 85°C
- Dimensions: 70mm x 70mm x 8mm
- White, 900um for Mon Port, Colored Bare Fiber for Other Ports



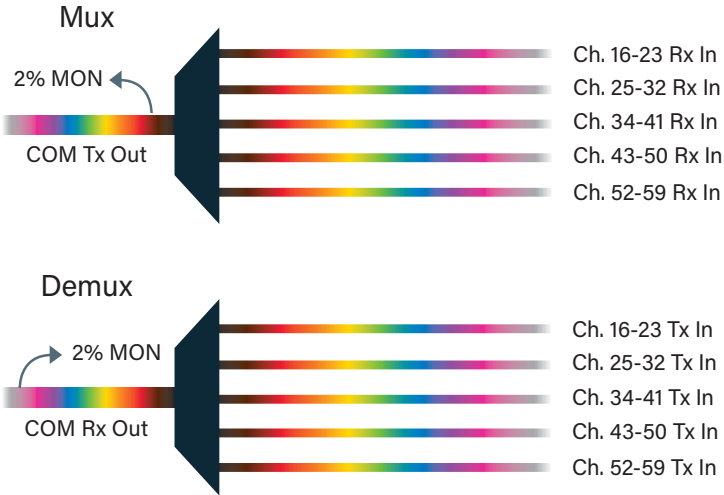
1. Optical Requirements

Parameter	Value
Passband Width, DWDM Channel Ports (Min.)	$\geq \text{ITU} \pm 0.11\text{nm}$
Passband Ripple (Max.)	$\leq 0.5\text{dB}$
Isolation, Adjacent Channel - DWDM (Min.)	$\geq 30\text{dB}$
Isolation, Non-Adjacent Channel - DWDM (Min.)	$\geq 40\text{dB}$
Return Loss (Min.)	$\geq 45\text{dB}$
Directivity - DWDM Ports (Min.)	$\geq 50\text{dB}$
Polarization Dependent Loss (Max.)	$\leq 0.2\text{dB}$
Polarization Mode Dispersion (Max.)	$\leq 0.2\text{ps}$

2. Insertion Loss

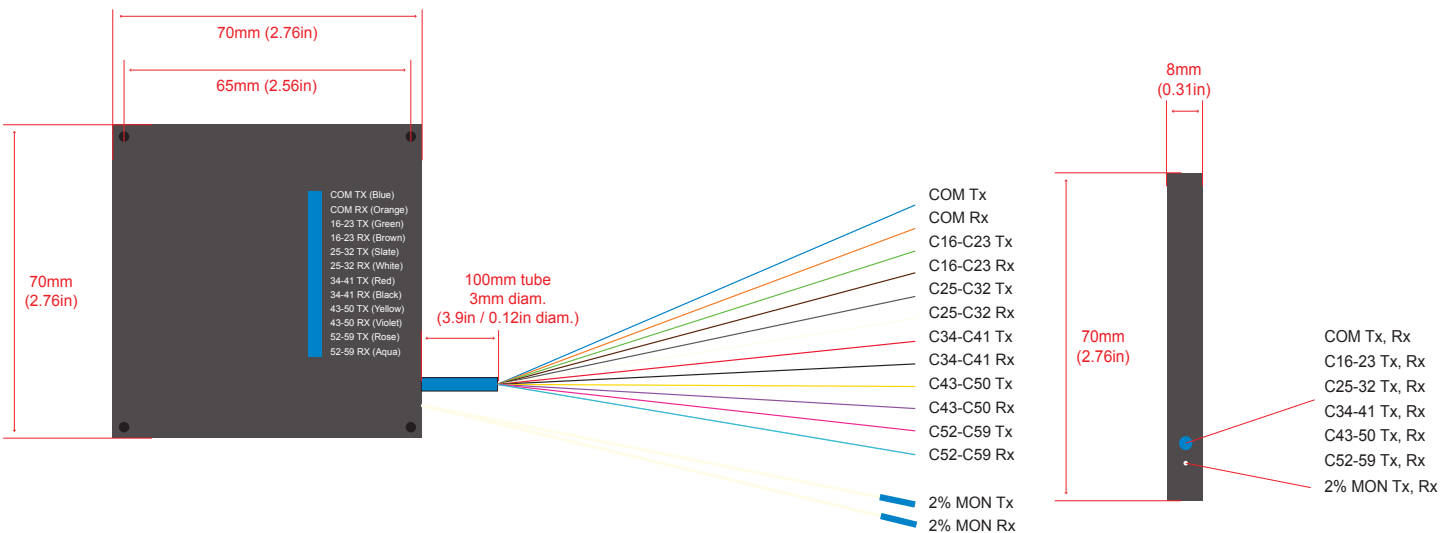
Parameter	Value
DWDM Channel Insertion Loss (Max.)	$\leq 2.5\text{dB}$
MON Port Insertion Loss	21.5dB Mux/19.0dB Demux

3. Network Diagram

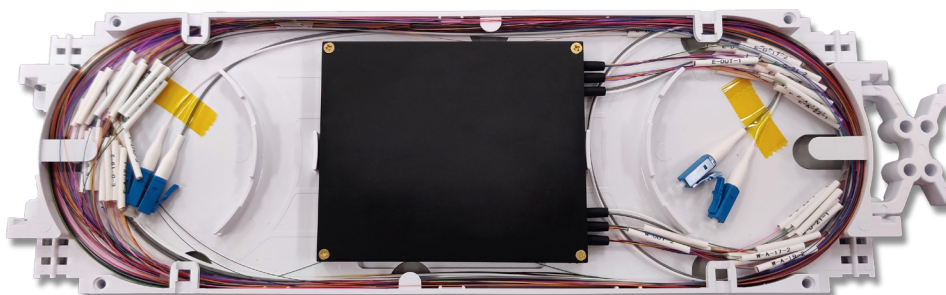


Channel	Mux		Demux	
	Typical	Max	Typical	Max
2% MON	21.3	21.5	19.0	19.0
CH. 16-23	1.1	1.3	2.3	2.5
CH. 25-32	1.4	1.6	2.1	2.2
CH. 34-41	1.7	1.9	1.7	1.9
CH. 43-50	2.1	2.2	1.4	1.6
CH. 52-59	2.3	2.5	1.1	1.3

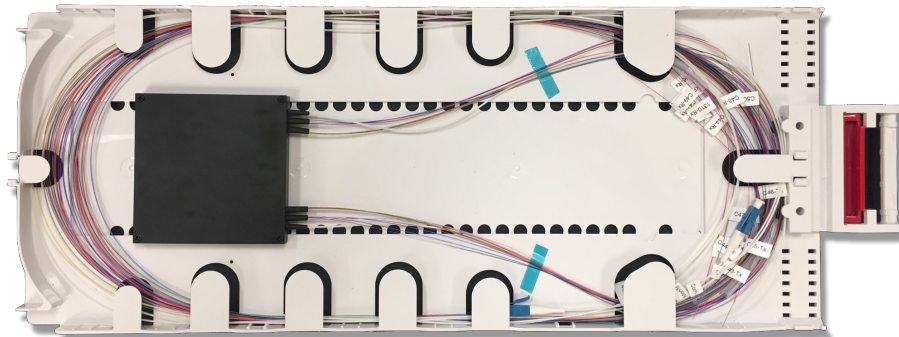
4. Mechanical Diagram



5. Tray Integration



Module in Tyco "B" Tray



Module in Tyco "D" Tray

6. Ordering Information: Module

Part Number	Description
ZS-DW1-BPS140ML-8-1-16-0-2	DWDM BPS 100GHz 40 CH., LC/UPC 900um on Mon Only, CH. 16 Start, 8+1 Skip, MON, 2M Fibers, Module Only
ZS-DW1-BPS140ML-8-1-16-0-2-S	DWDM BPS 100GHz 40 CH., LC/UPC 900um on Mon Only, CH. 16 Start, 8+1 Skip, MON, 2M Fibers, Module Only, Submersible
ZS-DW1-BPS140ML-8-1-16-0-3-S	DWDM BPS 100GHz 40 CH., LC/UPC 900um on Mon Only, CH. 16 Start, 8+1 Skip, MON, 3M Fibers, Module Only, Submersible

7. Contact Information

Tel: 800.590.9535

Web: <http://www.approvednetworks.com>