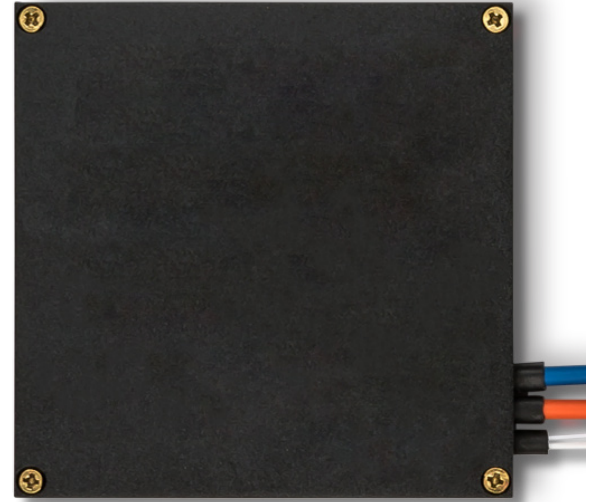


Features:

- Single Fiber OSP DWDM 16 Channel 8 Service Demux
- Channel Wavelengths: DWDM CH. 21 - CH. 36
- Channel Spacing: 100GHz
- Maximum Optical Power: 300mW
- Connector Type: LC/UPC
- Reliability: Telcordia GR-1209, GR-1221
- Operating Temperature: -40 to 85°C
- Storage Temperature: -40 to 85°C



- Dimensions: 70mm x 70mm x 8mm
- White, 900um for Mon Port, Colored Bare Fiber for Other Ports



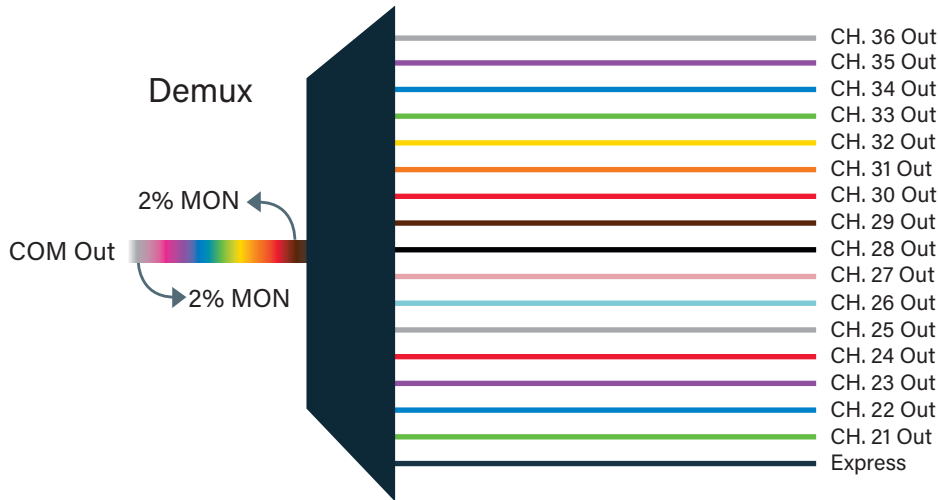
1. Optical Requirements

Parameter	Value
Passband, DWDM Channel Ports (Min.)	$\geq \text{ITU} \pm 0.11\text{nm}$
Passband Ripple (Max.)	$\leq 0.5\text{dB}$
Isolation, Adjacent Channel - DWDM (Min.)	$\geq 30\text{dB}$
Isolation, Non-Adjacent Channel - DWDM (Min.)	$\geq 40\text{dB}$
Isolation, EXP Port (Min.)	$\geq 12\text{dB}$
Return Loss - All Ports (Min., Including Connectors)	$\geq 45\text{dB}$
Directivity - DWDM Ports (Min.)	$\geq 50\text{dB}$
Polarization Dependent Loss (Max.)	$\leq 0.2\text{dB}$
Polarization Mode Dispersion (Max.)	$\leq 0.2\text{ps}$

2. Insertion Loss

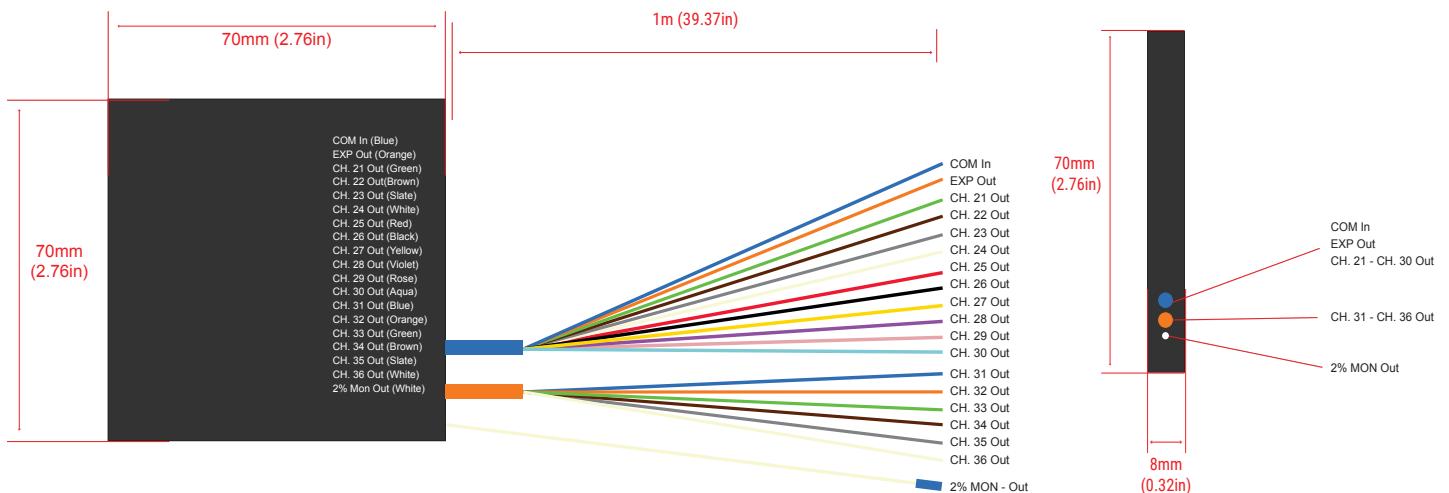
Parameter	Value
DWDM Channel Insertion Loss (Max., Incl. Connectors)	$\leq 6.0\text{dB}$
EXP Insertion Loss (Max., Incl. Connectors)	$\leq 5.0\text{dB}$
MON Port Insertion Loss (Incl. Connectors)	19.0dB Demux

3. Network Diagram



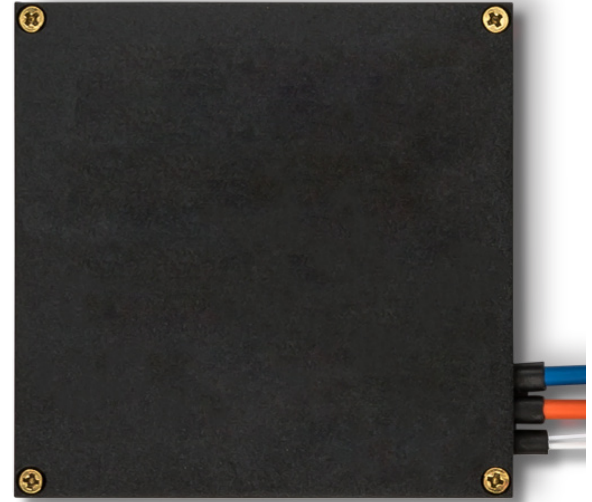
Channel	Typical	Max
CH. 36	1	1.2
CH. 35	1.3	1.5
CH. 34	1.6	1.8
CH. 33	1.9	2.1
CH. 32	2.2	2.4
CH. 31	2.5	2.7
CH. 30	2.8	3
CH. 29	3.1	3.3
CH. 28	3.4	3.6
CH. 27	3.7	3.9
CH. 26	4	4.2
CH. 25	4.3	4.5
CH. 24	4.6	4.8
CH. 23	4.9	5.1
CH. 22	5.2	5.4
CH. 21	5.5	5.7
EXP	4.6	4.8

4. Mechanical Diagram



Features:

- Single Fiber OSP DWDM 16 Channel 8 Service Demux
- Channel Wavelengths: DWDM CH. 37 - CH. 52
- Channel Spacing: 100GHz
- Maximum Optical Power: 300mW
- Connector Type: LC/UPC
- Reliability: Telcordia GR-1209, GR-1221
- Operating Temperature: -40 to 85°C
- Storage Temperature: -40 to 85°C



- Dimensions: 70mm x 70mm x 8mm
- White, 900um for Mon Port, Colored Bare Fiber for Other Ports



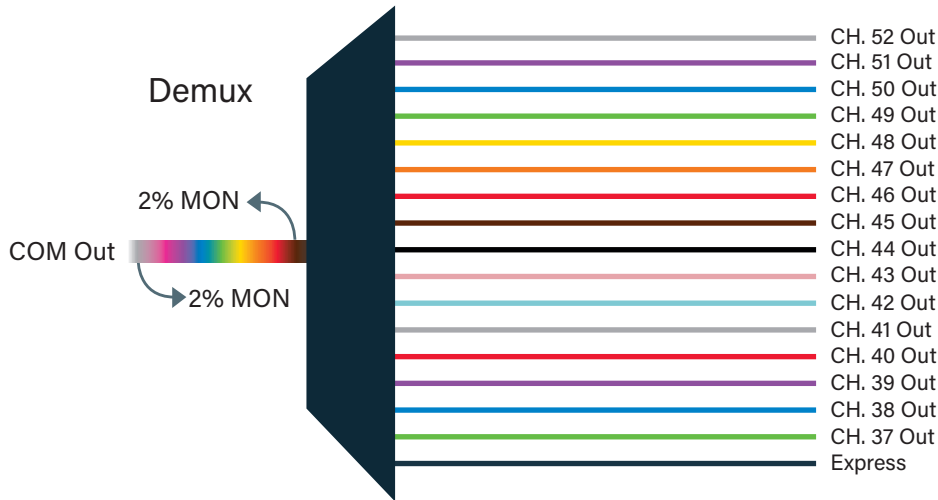
1. Optical Requirements

Parameter	Value
Passband, DWDM Channel Ports (Min.)	$\geq \text{ITU} \pm 0.11\text{nm}$
Passband Ripple (Max.)	$\leq 0.5\text{dB}$
Isolation, Adjacent Channel - DWDM (Min.)	$\geq 30\text{dB}$
Isolation, Non-Adjacent Channel - DWDM (Min.)	$\geq 40\text{dB}$
Isolation, EXP Port (Min.)	$\geq 12\text{dB}$
Return Loss - All Ports (Min., Including Connectors)	$\geq 45\text{dB}$
Directivity - DWDM Ports (Min.)	$\geq 50\text{dB}$
Polarization Dependent Loss (Max.)	$\leq 0.2\text{dB}$
Polarization Mode Dispersion (Max.)	$\leq 0.2\text{ps}$

2. Insertion Loss

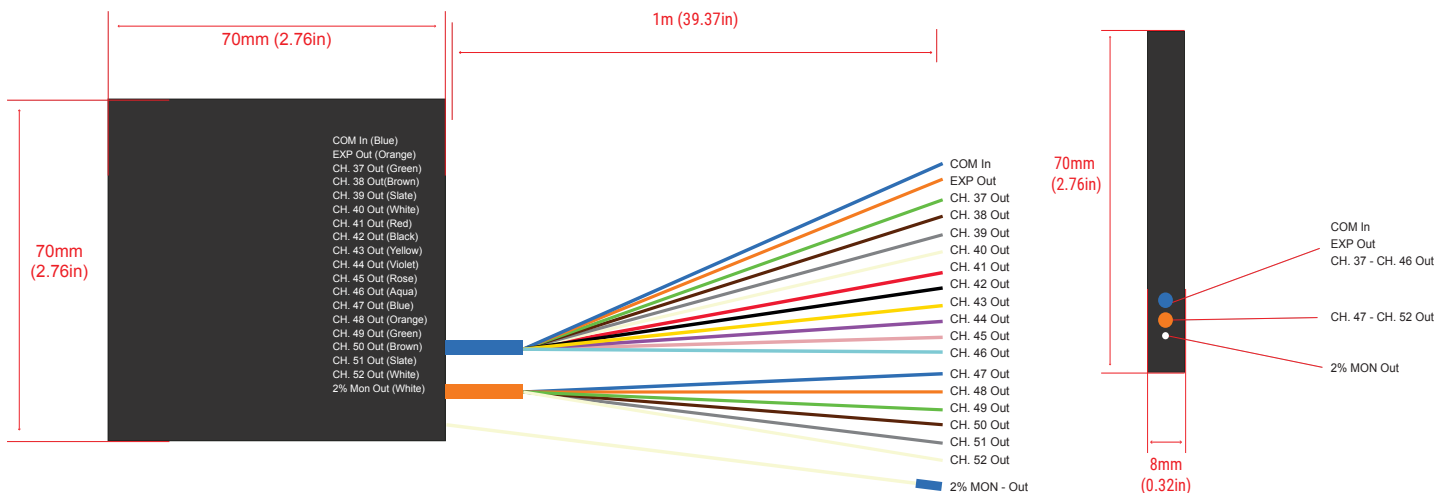
Parameter	Value
DWDM Channel Insertion Loss (Max., Incl. Connectors)	$\leq 6.0\text{dB}$
EXP Insertion Loss (Max., Incl. Connectors)	$\leq 5.0\text{dB}$
MON Port Insertion Loss (Incl. Connectors)	19.0dB Demux

3. Network Diagram

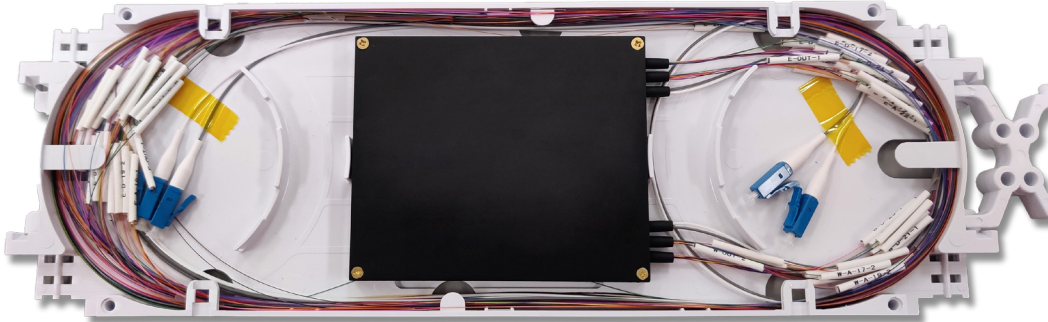


Channel	Typical	Max
CH. 36	1	1.2
CH. 35	1.3	1.5
CH. 34	1.6	1.8
CH. 33	1.9	2.1
CH. 32	2.2	2.4
CH. 31	2.5	2.7
CH. 30	2.8	3
CH. 29	3.1	3.3
CH. 28	3.4	3.6
CH. 27	3.7	3.9
CH. 26	4	4.2
CH. 25	4.3	4.5
CH. 24	4.6	4.8
CH. 23	4.9	5.1
CH. 22	5.2	5.4
CH. 21	5.5	5.7
EXP	4.6	4.8

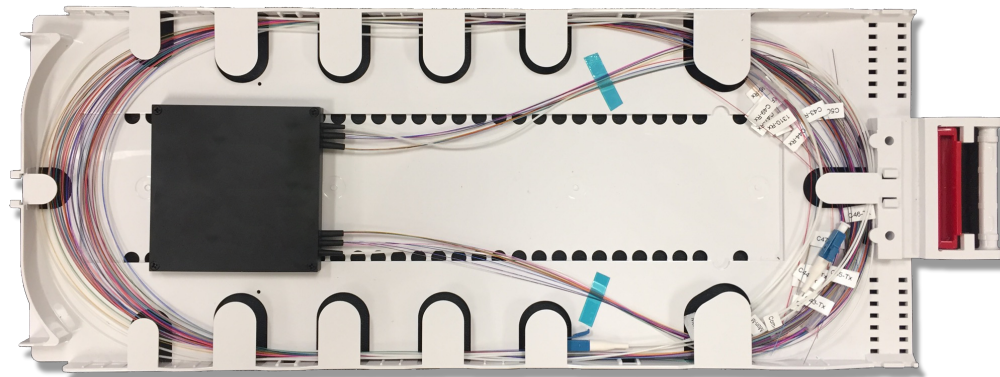
4. Mechanical Diagram



5. Tray Integration



Module in Tyco "B" Tray



Module in Tyco "D" Tray

6. Ordering Information: Module

Part Number	Description
ZS-DW1-D116C0-NN21-0-1	DWDM, Single Module, Single Fiber DEMUX, 100G Spacing, 16 Channel/8 Service, Express Port, No Connectors Except 900um LC MON, CH. 21 Start, Module Only, 1m Fibers
ZS-DW1-D116C0-NN37-0-1	DWDM, Single Module, Single Fiber DEMUX, 100G Spacing, 16 Channel/8 Service, Express Port, No Connectors Except 900um LC MON, CH. 37 Start, Module Only, 1m Fibers

7. Contact Information

Tel: 800.590.9535

Web: <http://www.approvednetworks.com>