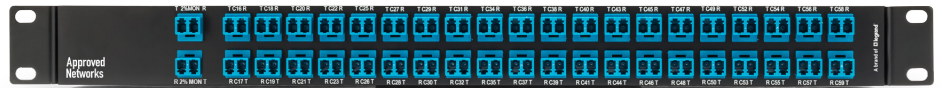


Features:

- 44 Channel Dual Fiber DWDM Mux/Demux Ch. 16–59 with AAWG

- Channel Wavelengths: DWDM ITU Ch. 16–59



- Channel Spacing: 100GHz

- RoHS compliant

- Reliability: Telcordia GR-1209,GR-1221

- Operating Temperature: -5 to 65°C

- MON Operating Wavelength: 1260nm - 1620nm

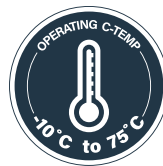
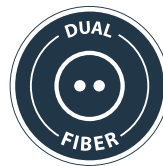
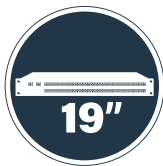
- Storage Temperature: -40 to 85°C

- Maximum Optical Power: 300mW

- Dimensions: 250mm x 440mm x 44mm

- Connector Type - All Ports: LC/UPC

- Faceplate: 482.6mm x 44mm



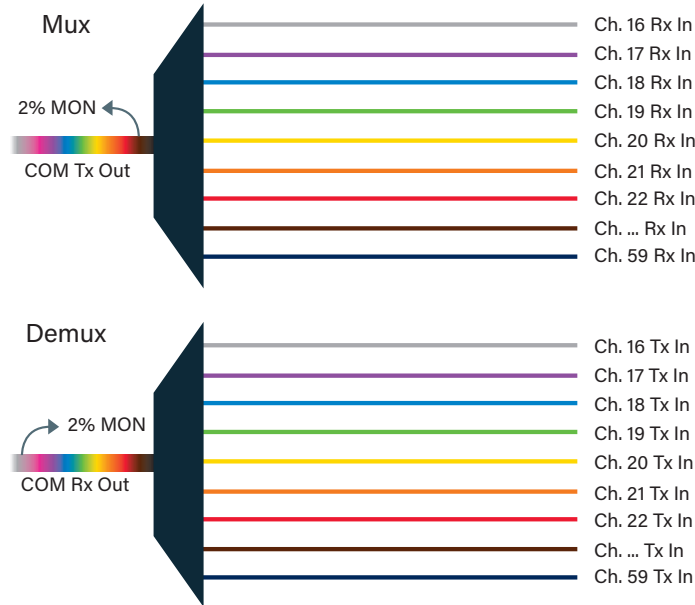
1. Optical Requirements

Parameter	Value
Passband Width	25GHz @0.5dB; 67GHz @3.0dB
Isolation, Adjacent Channel - DWDM	≥ 25dB
Isolation, Non-Adjacent Channel - DWDM	≥ 30dB
Total Isolation	≥ 24dB
Return Loss	≥ 40dB
Directivity	≥ 40dB
Polarization Dependent Loss	≤ 0.5dB
Polarization Mode Dispersion	≤ 0.5ps

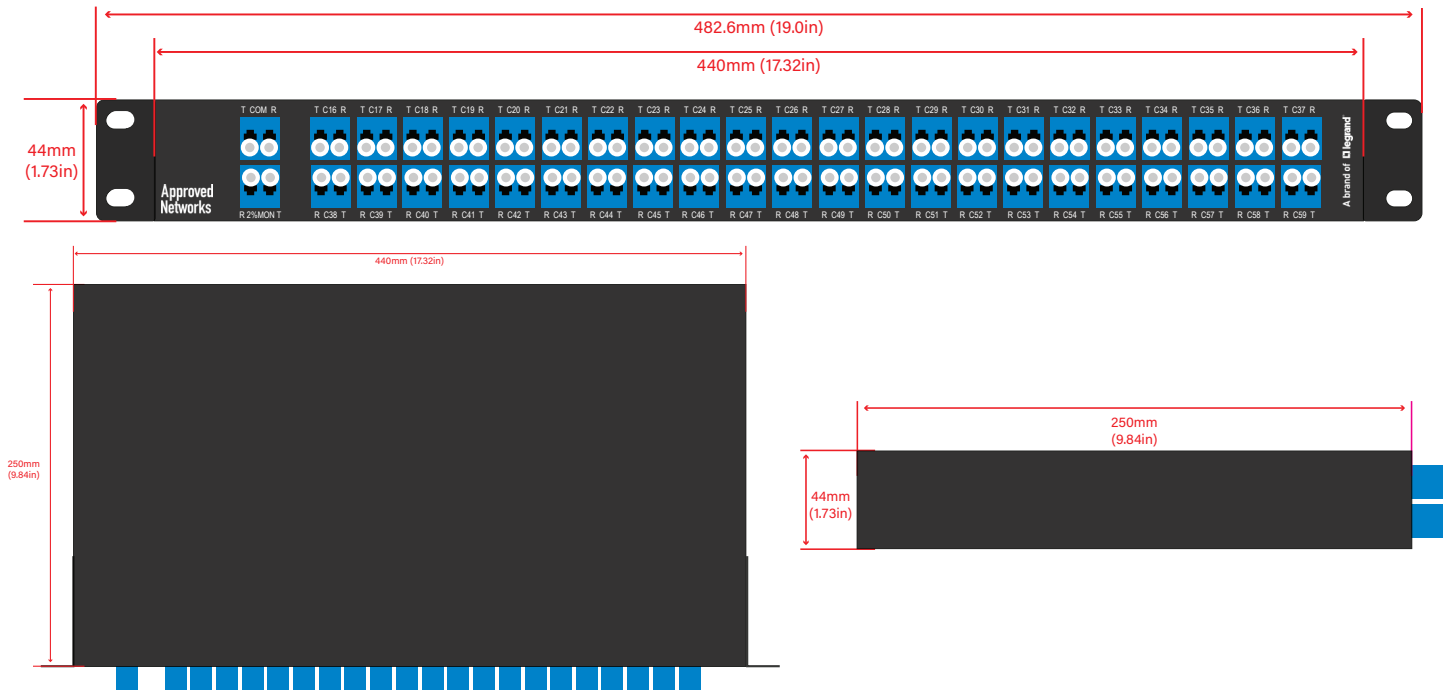
2. Insertion Loss

Parameter	Value
DWDM Channel Insertion Loss (Typ.)	4.5dB
DWDM Channel Insertion Loss (Max.)	≤ 5.9dB
MON Port Insertion Loss	24.9dB Mux/19.0dB Demux

3. Network Diagram



4. Mechanical Diagram



5. Ordering Information: Modules

Part Number	Description
ZS-DWDM-MD-100-44-L-8-0-16-R	DWDM M/D Athermal AWG 100GHz 44 CH., LC, 8 Skip 0, CH. 16 Start, 2% Mon, 1RU

6. Contact Information

Tel: 800.590.9535

Web: <http://www.approvednetworks.com>