

The OnePort Programmer from Approved Networks is conveniently small and portable with proprietary software that is both intuitive and easy-to-use. OnePort takes the complexity out of coding, whether programming a single transceiver or an entire batch.

System Requirements:

Windows 10 or above

Apple MacOS 11.6 or above

RAM: 4GB minimum

Storage Required: 17MB

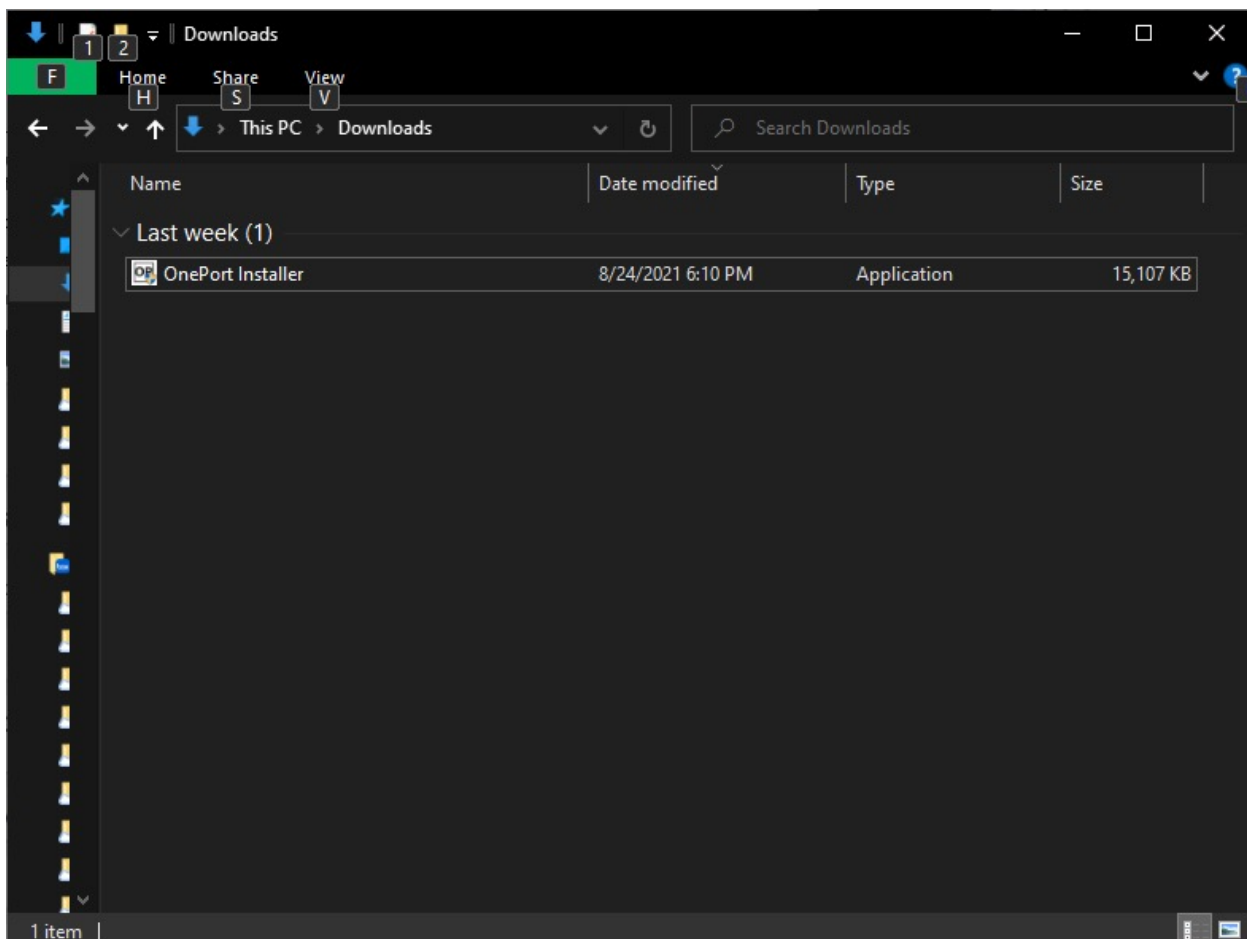
Internet Connection

Download and Installation:

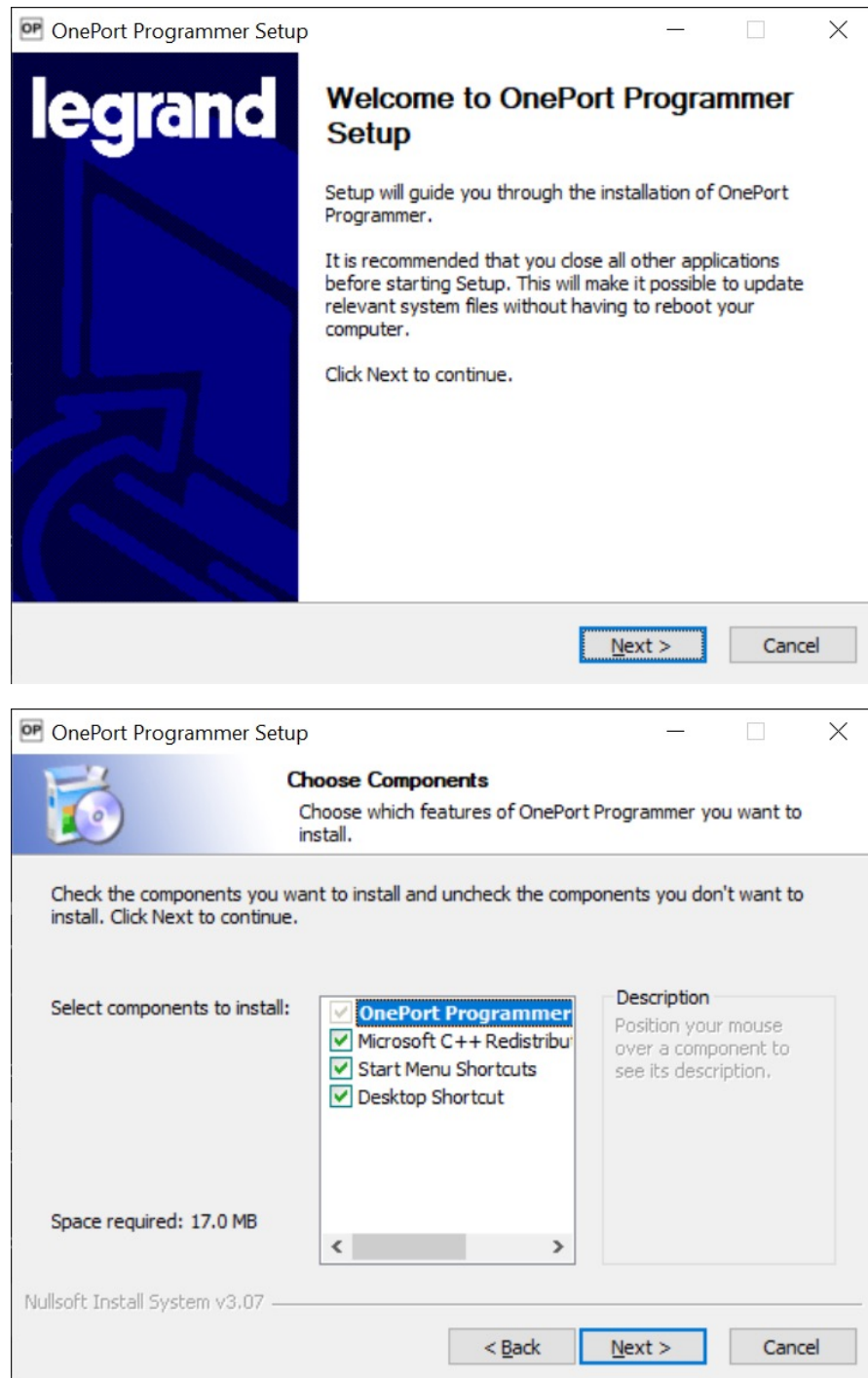
Download the OnePort Programmer software from: approvednetworks.com/oneport-downloads
Extract the contents of OnePort Installer zip file to a convenient folder.

Note: To install the OnePort Application Software, Admin Rights are required.

1. Locate the file OnePort Installer in the folder used to extract the files



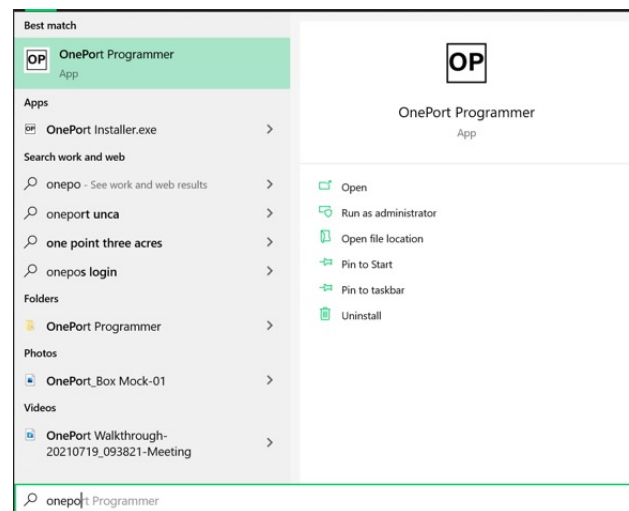
2. Run the OnePort Installer application



Leave "Microsoft C++ Redistributable Package x86" checked as it is a necessary component

Programming

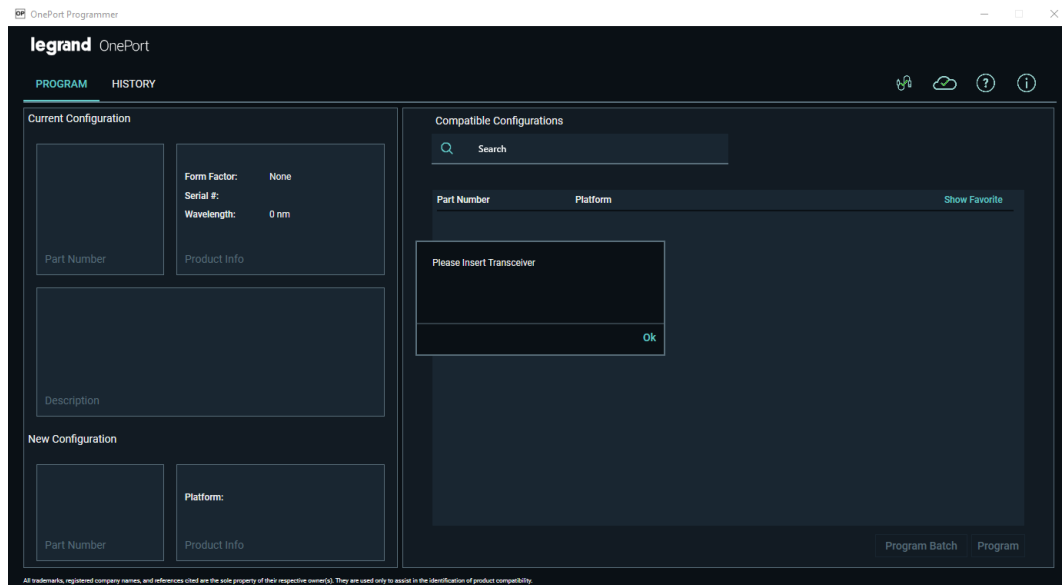
rogramming: Search for OnePort Programmer from the Windows Start Menu or click the desktop icon and run the application.



If the OnePort Programmer successfully establishes a connection to Approved Networks, the Cloud Database icon in the upper right corner will be green with a check mark. If it turns red, check to ensure the computer is connected to the Internet.



Connect the OnePort Programmer unit to the computer with the included USB cable. If the OnePort Programmer's USB port successfully establishes a connection to the computer, the USB connection icon will be green. Otherwise, the USB Connection icon will turn red, and the error message "Please Connect OnePort Programmer" will pop up. Make sure connections are secure and check the troubleshooting section of this guide if necessary.

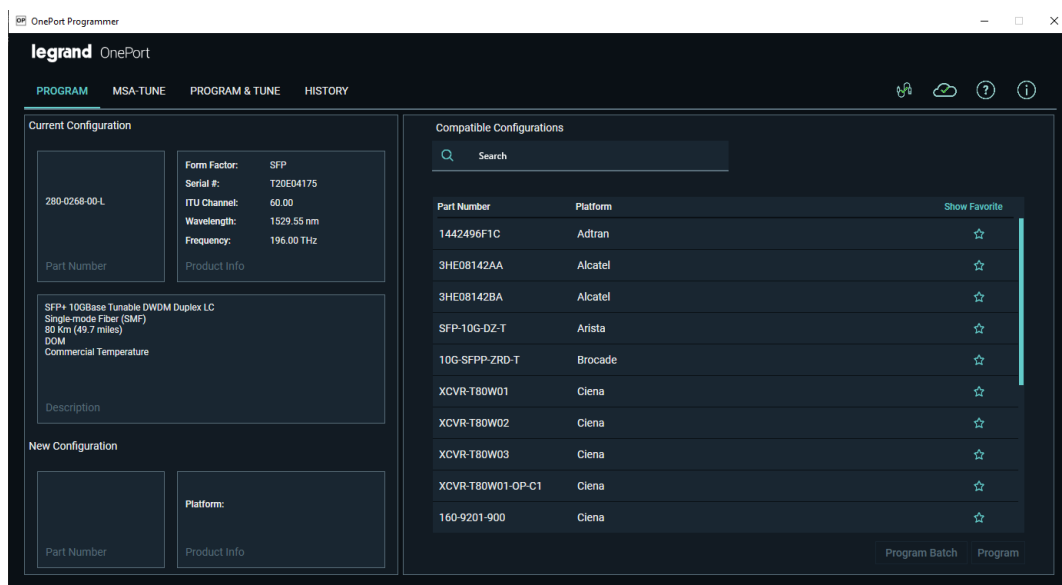


When both “USB Connection” and “Cloud Database” icons are green, you are ready to program a transceiver.

Insert the OnePort programmable transceiver to be programmed into the SFP, QSFP or XFP slot. Only one transceiver or AOC or DAC can be reprogrammed at a time. Please note that only OnePort-compatible transceivers identified with the part numbers starting with “OP-” or ending with “-OP”, can be reprogrammed.

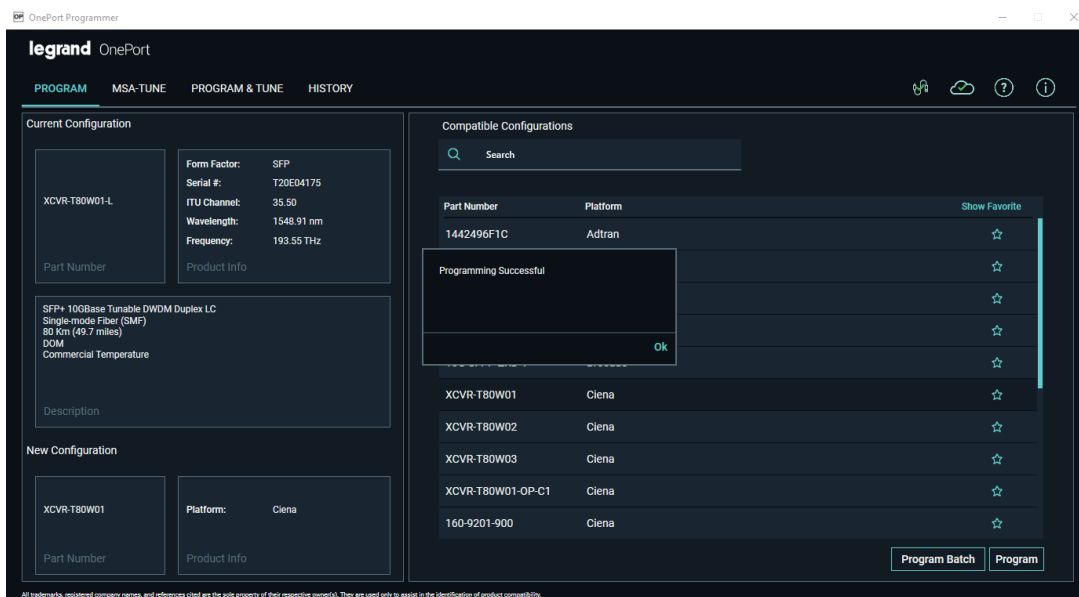
Note: Transceivers with part numbers starting with “OP-” are MSA-coded from the factory, and the transceivers ending with “-OP” are programmed with a vendor compatibility from the factory.

Depending on the transceiver inserted, the software downloads all available compatibilities to which the transceiver can be reprogrammed.

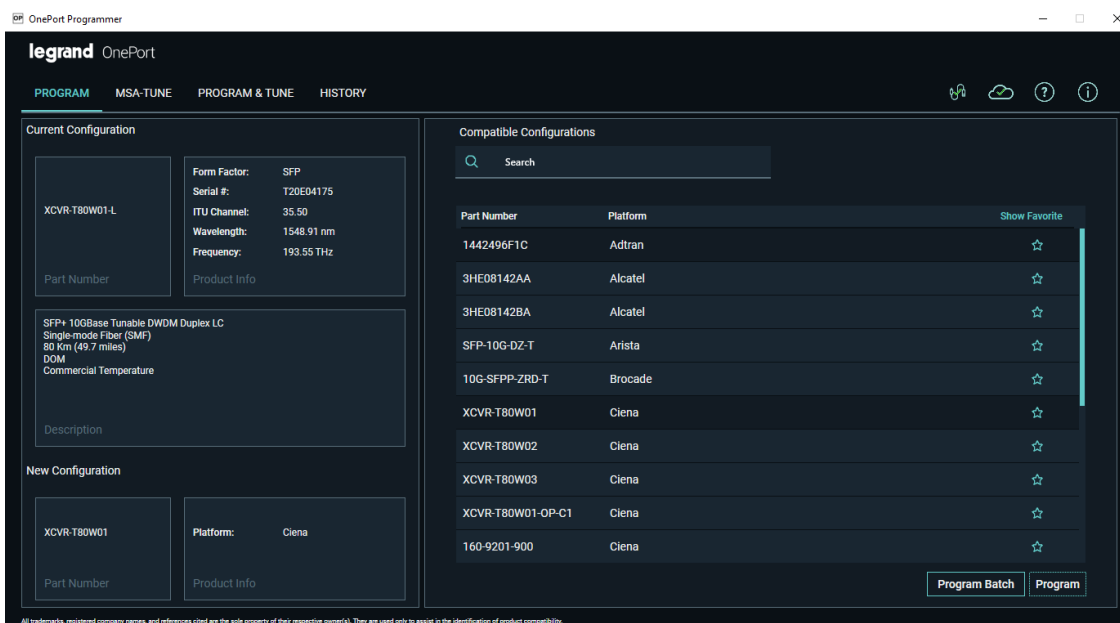


Select the desired platform, double check the selection on the right-hand side, note down the part number under "New Configurations", and click "Program" to start the process.

It takes less than half a minute for programming to finish.

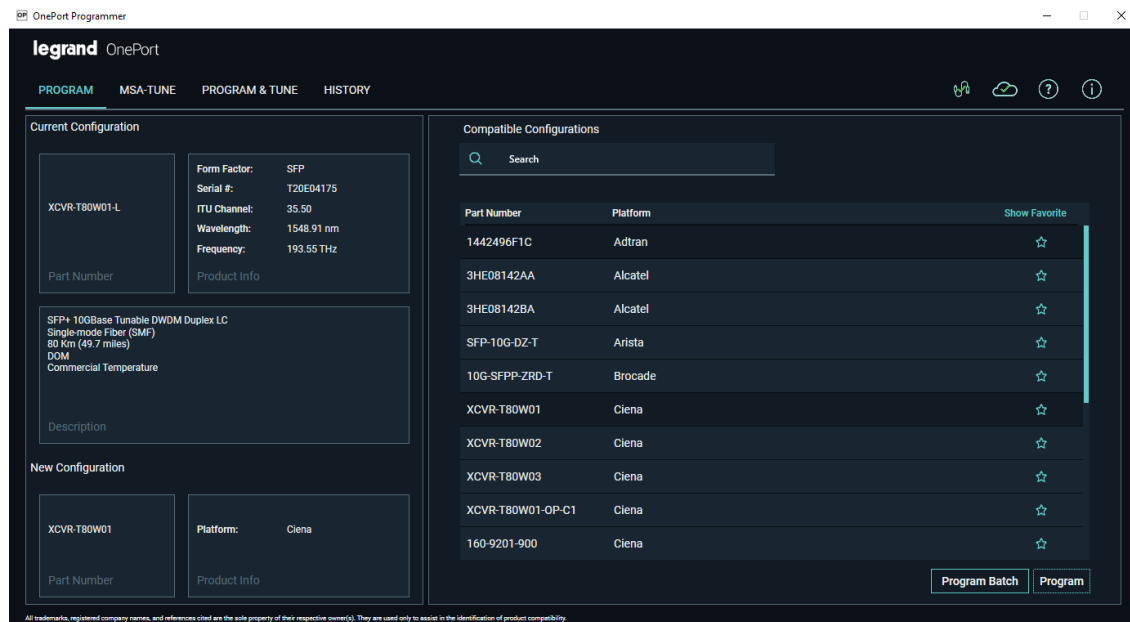


Confirm successful programming by verifying the Part Number on the left-hand side matches with the Part Number chosen and noted down prior to programming.

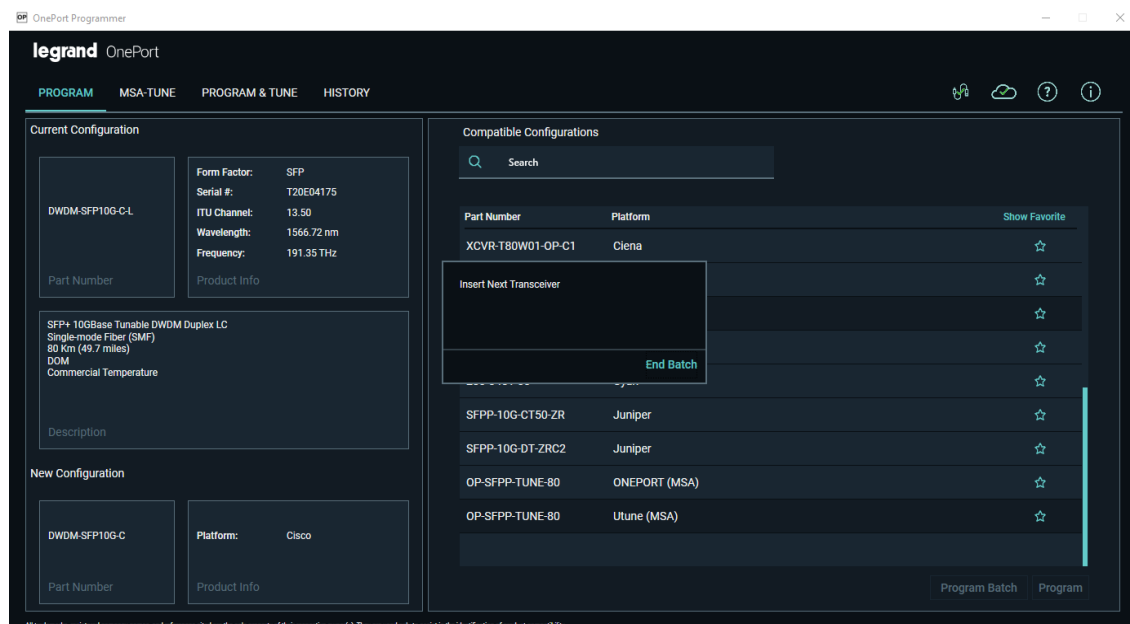


Batch programming:

To program more than one transceiver with the same compatibility, use the “Program Batch” button to start the programming process.



After successful programming of the first transceiver, the program waits for the next transceiver to be inserted.



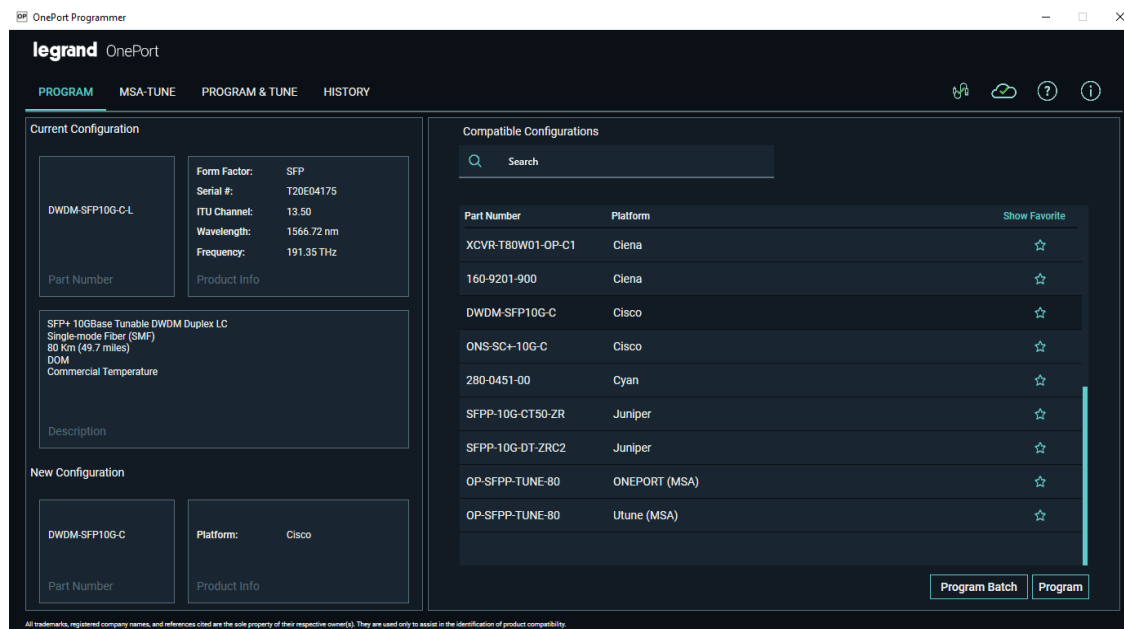
When finished with the last one, press the “End Batch” button to conclude batch programming.

Tunable Transceivers:

Tunable transceivers can be programmed just like programming a non-tunable transceiver, or they can be tuned to a specific channel with our tuning features.

Programming:

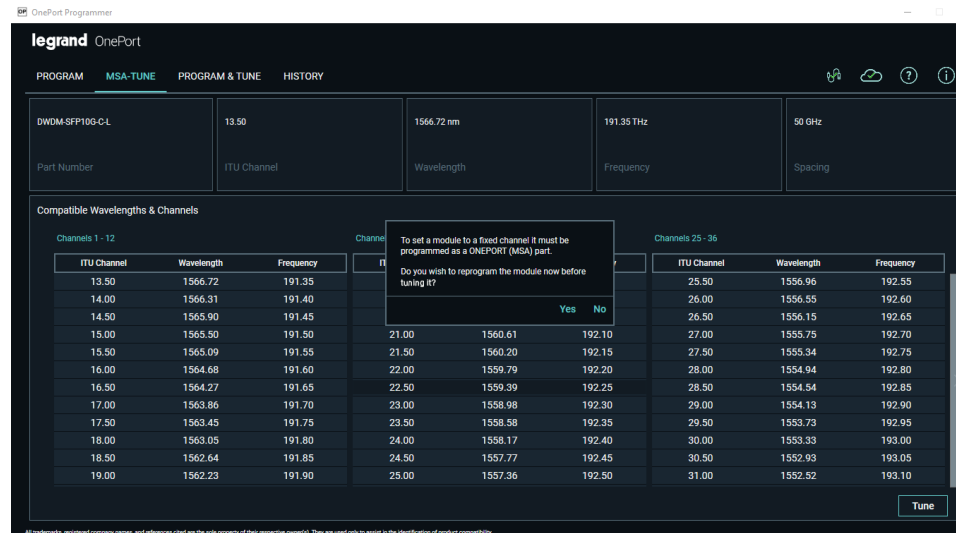
Select the desired platform, double check the selection on the right-hand side, note down the part number under “New Configurations”, and click “Program” to start the process. It takes less than half a minute for programming to finish.



Confirm successful programming by verifying the Part Number on the left-hand side matches with the part number chosen and noted down prior to programming.

MSA Tune:

MSA Tune is to tune a tunable transceiver to the Multiple Source Agreement (MSA) specification. To tune the transceiver, you must first ensure it is programmed as a "ONEPORT (MSA) OP-SFPP-TUNE-80." If it is not, when you select your channel and go to tune it, it will show the pop-up window below and ask if the application is to reprogram the transceiver before tuning it.



If it is already in the ONEPORT (MSA) format, no reprogramming is necessary, and the application will tune the transceiver to the selected channel. Once tuning is completed, the new ITU channel will show in the part number to the left.

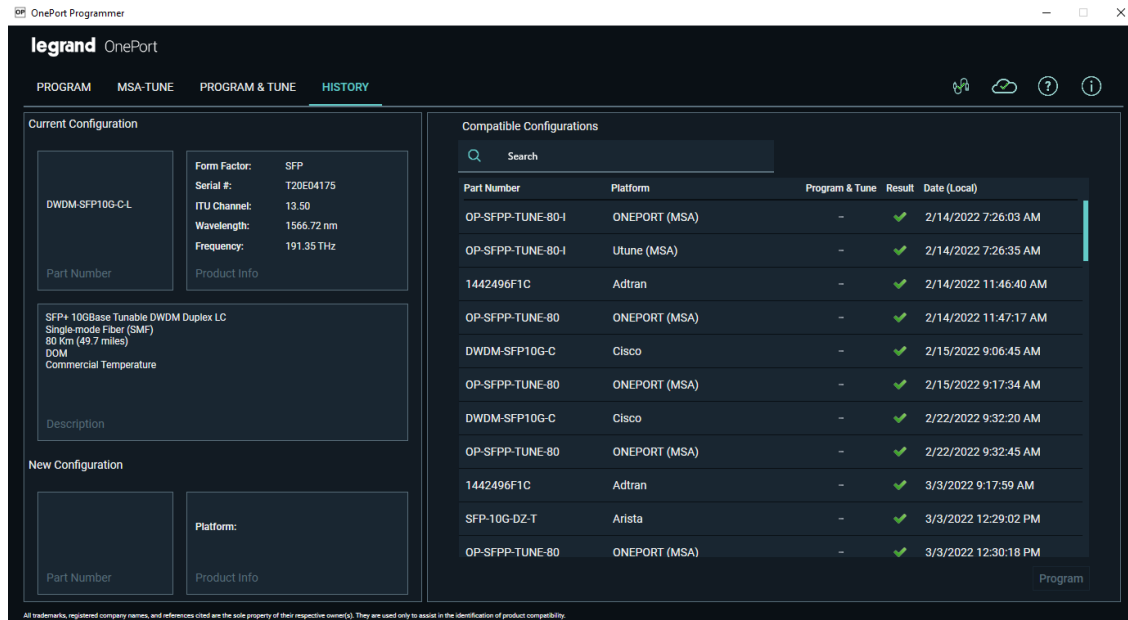
Program and Tune:

To program and tune a transceiver to a compatible and fixed wavelength (ITU Channel) configuration at the same time, use Program & Tune. Select the desired compatibility and wavelength (ITU channel) in the left-hand window and click on the "Program" button. Once programming and tuning is completed, the new configuration will show in the part number to the left. It takes less than half a minute for programming to finish.



History:

As the transceivers are programmed or tuned, the history is captured and can be displayed under the history table.



Troubleshooting:

If the OnePort Programmer unit is not recognized by the software, check if Device Manager has OnePort listed under Universal Serial Bus devices. If not, please contact your sales rep or techsupport@approvednetworks.com for any support.

